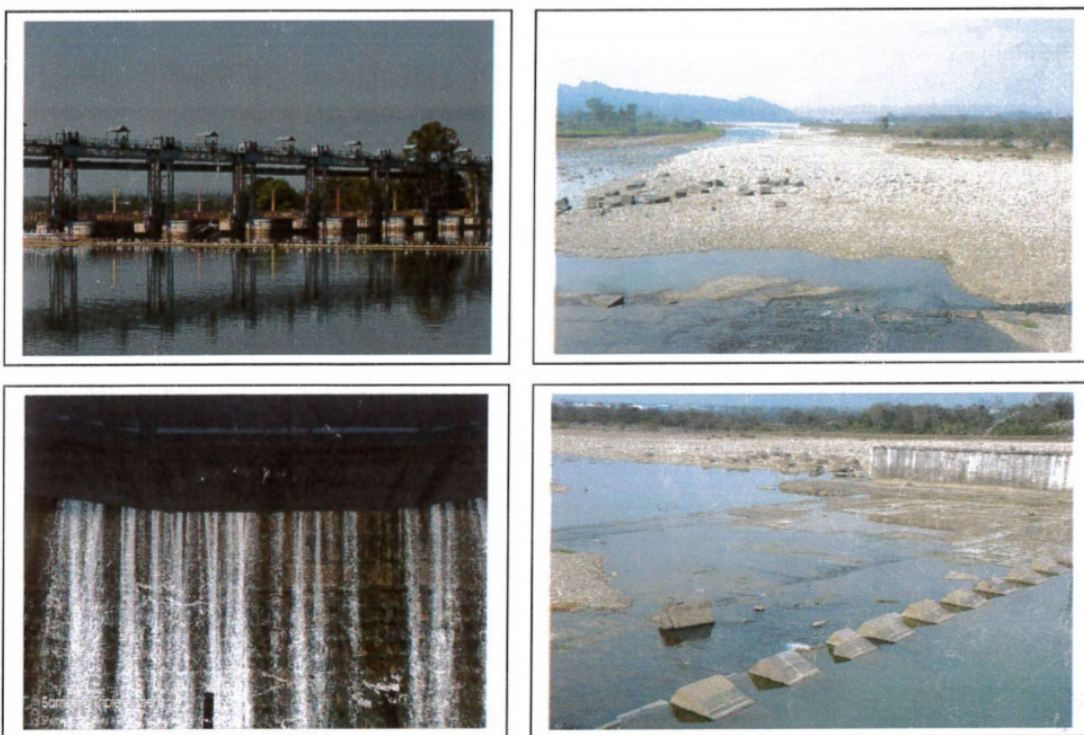


**DAM REHABILITATION AND IMPROVEMENT PROJECT (DRIP)
PHASE II**

(Funded by World Bank)

**ASAN BARRAGE
(PIC: GENUAWA001)**

ENVIRONMENTAL AND SOCIAL MANAGEMENT PLAN



February 2021

**Office of Executive Engineer
Project Civil Maintenance
UJVN Limited
Dhalipur - 248142**

e-mail: eepcmdhalipur@gmail.com

Table of Contents

CHAPTER 1: PROJECT OVERVIEW AND FINDINGS OF ESDD.....	4
1.1. PROJECT OVERVIEW	4
1.2. OBJECTIVE AND CONTEXT OF ESMP.....	4
1.3. SUB PROJECT DESCRIPTION	5
1.4. PROPOSED INTERVENTIONS/ ACTIVITIES AND INTENDED OUTCOMES	5
1.5. ESDD FINDINGS AND KEY IMPACTS TO BE ADDRESSED	6
CHAPTER 2: ENVIRONMENTAL AND SOCIAL MANAGEMENT PLANS	8
2.1 GENDER BASED VIOLENCE OR SEA/SH RELATED ACTIONS (ESS1)	8
2.2 LABOUR MANAGEMENT PROCEDURE (ESS2)	8
2.2.1 <u>Overview of labour use in the project</u>	8
2.2.2 <u>Assessment of Key Potential Risks</u>	9
2.2.3 <u>Responsible staff</u>	10
2.2.4 <u>Policies and procedures</u>	10
2.2.5 <u>Age of employment</u>	15
2.2.6 <u>Terms and conditions</u>	15
2.2.7 <u>Grievance Mechanism</u>	16
2.2.8 <u>Contractor Management</u>	17
2.2.9 <u>Community Workers</u>	17
2.3 RESOURCE EFFICIENCY AND POLLUTION PREVENTION (ESS3)	17
2.3.1 <u>Pollution Prevention and Environment Quality Management Plan (PPEQMP)</u>	17
2.3.2 <u>Overview of PPEQMP</u>	18
2.3.3 <u>How water and other resource use will be planned</u>	21
2.3.4 <u>Environmental Quality Monitoring Plan and protocols</u>	21
2.3.5 <u>Reporting</u>	22
2.4 COMMUNITY HEALTH AND SAFETY (ESS4)	22
2.4.1 <u>Overview</u>	22
2.4.2 <u>Hazard Identification</u>	22
2.4.3 <u>Hazard Risk Management</u>	23
2.4.4 <u>Communication and Consultation (Workers & community)</u>	24
2.4.5 <u>Emergency Management Plan</u>	24
2.4.6 <u>Emergency control Centre</u>	24

2.4.7	<u>Reference to IFC Environmental Health and Safety Guidelines</u>	25
2.5	BIODIVERSITY CONSERVATION MANAGEMENT PLAN (ESS 6)	25
2.5.1	<u>Overview of Biodiversity conservation and Management Plan (BCMP)</u>	25
2.5.2	<u>Sub Project Description</u>	25
2.5.3	<u>Asan Conservation Reserve</u>	25
2.5.4	<u>Likely Impact of Project Activities on Biodiversity areas</u>	26
2.5.5	<u>Regulatory Applicability and requirements</u>	26
2.5.6	<u>Conservation and Management Plan</u>	27
2.5.7	<u>Monitoring, Compliance reporting and Budget</u>	28
2.6	STAKEHOLDER ENGAGEMENT PLAN (ESS10)	28
2.6.1	<u>Identification of Stakeholders</u>	28
2.6.2	<u>Stakeholder Consultation</u>	28
2.6.3	<u>Stakeholder Engagement and Project cycle</u>	29
2.6.4	<u>Timelines for Information disclosure and Feedback</u>	31
2.6.5	<u>Monitoring and reporting</u>	31
CHAPTER 3: ENVIRONMENTAL AND SOCIAL MITIGATION AND MONITORING PLAN		32
3.1	PURPOSE OF ES MITIGATION MANAGEMENT AND MONITORING	32
3.2	ES MITIGATION AND MONITORING PLAN – ACTION RESPONSIBILITY MATRIX	40
CHAPTER 4: IMPLEMENTATION ARRANGEMENTS AND ESMP BUDGET		42
4.1	IMPLEMENTATION AND SUPERVISION ARRANGEMENTS	42
 List of Annexures		
ANNEXURE 1: OUTLINE OF CONTRACTOR’S ESMP		46

ACRONYMS

AIDS:	Acquired immune deficiency syndrome
CPCB:	Central Pollution Control Board
CPMU:	Central Project Management Unit
CWC:	Central Water Commission
DRIP:	Dam Rehabilitation and Improvement Project
EAP:	Emergency Action Plan
EMC:	Engineering and Management Consultant
ESCP:	Environment and Social Commitment Plan
ESDD:	Environmental and Social Due Diligence
ESF:	Environmental and Social Framework
ESHS:	Environmental, Social, Health and Safety
ESIA:	Environmental and Social Impact Assessment
ESMF:	Environmental and Social Management Framework
ESMP:	Environmental and Social Management Plan
ESS:	Environmental and Social Standard
ESZ:	Eco-sensitive Zone
GBV:	Gender Based Violence
GRM:	Grievance Redressal Mechanism
HIV:	Human immunodeficiency virus
IA:	Implementation Agency
LMP:	Labour Management Procedure
LPG:	Liquefied Petroleum Gas
NDMA:	National Disaster Management Authority
NGO:	Non-Governmental Organization
OHS:	Occupational Health & Safety
PDO:	Project Development Objective
PPE:	Personal Protective Equipment
PUC:	Pollution Under Control
QPR:	Quarterly Progress Report
SDMA:	State Disaster Management Authority
SEAH:	Sexual Exploitation, Abuse and Harassment
SEF:	Stakeholder Engagement Framework
SEP:	Stakeholder Engagement Plan
SPMU:	State Project Management Unit
ST:	Schedule Tribe
UJVN:	Uttarakhand Jal Vidyut Nigam
WB:	World Bank

CHAPTER 1: PROJECT OVERVIEW AND FINDINGS OF ESDD

1.1. PROJECT OVERVIEW

The proposed Dam Rehabilitation and Improvement Project (DRIP II) would complement the suite of ongoing and pipeline operations supporting India's dam safety program. The project development objective (PDO) is to increase the safety of selected dams in participating States and to strengthen dam safety management in India. Project Components include:

- Component 1: Rehabilitation and Improvement of Dams and Associated Appurtenances (US\$ 577.14 million);
- Component 2: Dam Safety Institutional Strengthening (US\$45.74 million);
- Component 3: Incidental Revenue Generation for sustainable operation and maintenance of dams(US\$26.84million);
- Component 4: Project Management (US\$68.13 million).
- Component 5: Contingency Emergency Response Component (US\$0 million).

The project is likely to be implemented for 300 dams in 18 states across the country. The primary beneficiaries of the project are the communities that live in dam breach flood inundation areas and the communities that depend on water, irrigation and electricity services provided by the dams that could be compromised by poor dam performance or failure. In addition to saving lives, improved dam safety will avoid potential flood damage to houses, farm areas, infrastructure (roads, bridges, and other public and private infrastructure) and industrial and commercial facilities. Improved dam safety will also reduce the likelihood of service interruptions due to dam failure as well as potentially improving dam service provision, overall efficiency and storage capacity, including during drought periods.

1.2. OBJECTIVE AND CONTEXT OF ESMP

A project level ESMF has been prepared and disclosed. In compliance with the ESMF, Environmental and Social Due Diligence has been carried out employing E&S risk screening templates. ESMF mandates that for all Low and Moderate Risk projects, a standard ESMP shall be prepared, which will be updated based on the sub project specific activities. Accordingly, Standard ESMP is prepared describing the process to manage the impacts identified during the ESDD. The ESMP also determines the implementation schedule, roles and responsibilities, reporting and monitoring requirements. The management plans included in this ESMP outline the environmental and social mitigation measures and management controls to be implemented in compliance with the E&S commitments.

This ESMP is a live document and is subjected to periodic review and updates. The Implementation Agency and contractors are primarily responsible for the implementation of the ESMP. Environmental and social management plans covering various phases, prepared as part of this ESMP shall be updated in line with the dynamics of project progress and stakeholder engagement inputs. If during the operationalization of this ESMP, new

conditions emerge and risks and impacts differ from that identified in the ESDD, a new ESMP may be prepared adapting to the new conditions.

1.3. SUB PROJECT DESCRIPTION

Asan barrage has been built across river Asan, a major tributary of River Yamuna in Dehradun District of Uttarakhand. The catchment area of Asan river upto the barrage site is 685 sq km. Asan barrage was constructed during the period from 1965 to 1967 by the UP Irrigation Department and named after Asan river. The Asan barrage is located on the confluence of River Asan and tail race of Dhalipur Power House. The Asan barrage is designed to divert 270 cumec of water through a 4 km long power channel. Out of this discharge, 70.8 cumec passes through the silt ejector tunnel and 199.2 cumec is used for power generation at Kulhal HEP. Thereafter, it is continued to Khara HEP at Saharanpur. The project was taken over and being operated by UJVNL since 2010.

1.4. PROPOSED INTERVENTIONS/ ACTIVITIES AND INTENDED OUTCOMES

The following rehabilitation proposals as described in the PST have been formulated based on DSRP recommendations and these proposals form the basis for preparation of ESDD report. Other rehabilitation measures listed under Part B in PST and Tourism, are not being taken up at the present time and therefore are not considered as part of the ESDD.

Structural Rehabilitation Works

- Special rehabilitation work of Asan barrage and other associated structures
- Construction of bridge (35 m span, steel girder bridge over land owned by UJVNL Ltd) across power channel & parallel to HR bridge of Asan barrage

Structural Measures for ensuring hydrological safety

- Repair and overhauling of hoisting arrangement of barrage gates
- Major repair/refurbishment of hoisting arrangement of HR gates of barrage
- Providing and fixing of chequered plates at Hoist Bridge of barrage gates & HR gates including miscellaneous fabrication works
- Protective coating (cold galvanized/polypoxy coating) on barrage & head regulator gates at Asan barrage

Basic Facilities Improvement

- Providing fencing and caution / warning sign board around barrage, power channel and its associated structures
- Repair of syphons
- Construction of four no of each type III (80 sqm each) & type IV (138 sqm each) residential quarters at Dhakrani (on land owned by UJVNL Ltd) for O&M staff of Asan Barrage
- Construction of meeting hall at Asan barrage.
- Providing fencing and caution /warning sign board along the reservoir & barrage.
- Refurbishment of left bank inspection road of Asan Barrage reservoir.

Instrumentation, SCADA, Surveillance system, etc.

- SITC of gate position sensor with display for 9 no of gates integration with existing SCADA system
- Installation of discharge measurement system
- Supply , installation, testing & commissioning of online silt monitoring system at Asan barrage
- Procurement of vehicles for O & M staff
- Procurement of vehicle for GM(Civil).

Scope of ESMP for various contractors:-

The applicability of scope of ESMP to various contract agencies would be as per the official scope of work defined in the signed contract agreement.

1.5. ESDD FINDINGS AND KEY IMPACTS TO BE ADDRESSED

ESDD has been carried out considering the above proposals/interventions. The screening and site assessment exercise has identified the nature of risk and impacts, with level of risk and the outcomes are documented in ESDD report.

As per the ESDD exercise, risk/impacts that have been identified relate to Water Quality, Physical Environment, labour and SEAH/GBV. The summarised environmental and social risks of identified activities with level of risk is presented in ESDD report. Environment risks of air, water, noise, land use, soil and resource use for special rehabilitation work of Asan barrage and other associated structures, construction of bridge across power channel, repair and overhauling of hoisting arrangement of gates, protective coating (cold galvanized/polypoxy coating) on barrage & head regulator gates, are considered moderate. Similarly, environment and social risk of labour camp and disposal of debris has also been identified as moderate. Due to location of barrage in “Asan Conservation Reserve”, impact of rehabilitation work on protected area has also been considered moderate. Risk of all other activities has been identified as Low. These risks are low to moderate and localised, short term and temporary in nature.

As per ESMF, Occupational Health and Safety (OHS) risk is envisaged across the project interventions / dams, a separate OHS plan in accordance with WBG Environmental Health and Safety (ESHS) Guidelines and Good Practice Note on Environmental, Health, and Safety approaches for Hydropower Projects (2018) shall be applicable to all sub-projects. Hence it was not being considered under screening criteria. Occupational health and safety is considered an important requirement and shall be managed as per OHS plan and will be part of Contractor’s ESMP.

Based on ESDD findings, WB Environmental & Social Standards (ESS) applicability analysis and recommended management plan is given at Table 1.1.

Table 1.1 WB-ESS Applicability Analysis and Recommended management plan

WB-ESS	Recommended Management Plan	Applicability
ESS1: Assessment and Management of Environmental and Social Risks and Impacts	Gender Based Violence or SEA/SH related actions	Applicable
ESS2: Labour and Working Conditions	Labour Management Procedure including Occupational health and Safety	Applicable
ESS3: Resource Efficiency, Pollution Prevention and Management	Pollution Prevention and Environment Quality Management Plan including Debris Management	Applicable
ESS 4: Community Health and Safety	Community Health and Safety Plan	Applicable
ESS 5: Land Acquisition, Restrictions on Land Use and Involuntary Resettlement	Resettlement Action Plan/ Livelihood improvement Plan	Not Applicable
ESS 6: Biodiversity Conservation and Sustainable Management of Living Natural resources	Biodiversity Conservation Plan	Applicable
ESS 7: Indigenous Peoples/Sub-Saharan African Historically Underserved Traditional Local Communities	Tribal Development Plan	Not Applicable
ESS 8: Cultural Heritage	Cultural Heritage Protection Plan	Not Applicable
ESS 10: Stakeholder Engagement Plan	Stakeholder Engagement Plan	Applicable

The above recommended plans are discussed in detail in Chapter 2.

CHAPTER 2: ENVIRONMENTAL AND SOCIAL MANAGEMENT PLANS

The E&S management plans prepared for the risks and impacts identified as part of ESDD are presented hereunder. Each plan includes mitigation measures specific to the risks and impacts and where applicable, sets out the framework for other plans and procedures to be developed later in the Project. Construction contractors will develop and implement their own site specific C-ESMPs.

2.1 GENDER BASED VIOLENCE OR SEA/SH RELATED ACTIONS (ESS1)

The following key actions are to be ensured during implementation:

S. No.	Key Action to address GBV/SEA/SH Risks	By Whom
1	Clearly define SEA/SH requirements in Bid-documents and also the requirement for a CoC which addresses SEA/SH, using Standard WB procurement documents	UJVN
2	Operationalize or constitute Internal Complaints Committee as per Prevention of Sexual Harassment at Workplace procedure	UJVN
3	Implement appropriate project-level activities such as: Separate, safe and easily accessible facilities for women and men in the place of work and the labour camps. (e.g. toilets should be located in separate areas, well-lit)display signs that the project site is an area where SEA/SH is prohibited.	Implementation by Contractor / GBV Focal Point at UJVN& overall supervision by Engineer in Charge
4	Ensure Codes of Conduct are clearly understood and signed by those with a physical presence at the project site; Train project staff on the behaviour obligations under the CoCs and Disseminate CoCs (including visual illustrations) and discuss with employees and local communities.	Engineer in Charge Contractor
5	Undertake regular M&E of progress on SEA/SH prevention and response activities, including reassessment of risks as appropriate.	GBV Focal Point at UJVN

Implementation costs would include: preparation of sign boards, posters, conducting of awareness trainings by Implementing Agency and also by Contractor.

2.2 LABOUR MANAGEMENT PROCEDURE (ESS2)

2.2.1 OVERVIEW OF LABOUR USE IN THE PROJECT

Number of Project Workers: Approximately 30-40 workers at different points of time (Direct workers, Contracted workers and Community workers) shall be engaged for the rehabilitation works

Characteristics of Project Workers: As per the proposed execution strategies for all Low to Moderate risk sub-projects, the following categories of project workers are identified:

- i) Direct workers – all the existing site officials including those sent on deputation from other departments involved in the project activities;
- ii) Contracted workers - all IAs would engage Contractors to undertake rehabilitation works; agencies/firms to support core service functions such as SCADA systems, etc. These contractors shall bring skilled Migrant workers for some of more specialized tasks; and
- iii) Community workers (or volunteers particularly for EAP).

Timing of Labour requirements: See Table below:

S.No.	Type	Numbers	Locations	Duration	Skills required
1	Direct Workers (Project officials)	5-7	Barrage	Throughout	Executive and Supervisory
2	Contracted Workers	25-30	Barrage	Throughout	Varied (skilled, semi-skilled)
3	Community Workers	5-10	Villages/areas in the vicinity of the Barrage	Only during EAP implementation	Community facilitation skills

Hence as per WB's guidance note¹, for such workers, Contractor needs to prepare detailed profile of Workforce as per table below:

Key activities	work	Schedule for such activities	Duration of contract	Rotation	Place of residence		
					workers from community	Within local community	On site

2.2.2 ASSESSMENT OF KEY POTENTIAL RISKS

Labour related risks would include:

- Safety issues while at work like injuries/accidents/ fatalities, Occupational health and safety risks due to exposure of workers to unsafe conditions while working at heights, working using lifts, handling of equipment and machinery, exposure to air and noise pollution etc. will be addressed through OHS guidelines.
- Short terms effects due to exposure to dust and noise levels, while atwork

¹ESF/SAFEGUARDS Interim Note: COVID-19 consideration in constructions/civil works projects

- Inadequate accommodation facilities for labour, including inadequate sanitation and health facilities
- Discrimination in Employment (e.g. abrupt termination of the employment, working conditions, wages or benefits etc.)
- Sexual harassment at work
- Absence or inadequate or inaccessible emergency response system for rescue of labour/workforce in situations of natural calamities.
- Health risks of labour relating to HIV/AIDS and other sexually transmitted diseases
- Non-payment of wages
- Unclear terms and conditions of employment
- Discrimination and denial of equal opportunity in hiring and promotions/incentives/training opportunities
- Denial for workers' rights to form worker's organizations, etc.
- Absence of a grievance mechanism for labour to seek redressal of their grievances/issues

2.2.3 **RESPONSIBLE STAFF**

See Table below for list of key activities with responsibilities:

S.No.	Activity	Responsibility
1	Engagement and management of Contractors	IA (UJVN Limited)
2	Engagement and management of Sub-Contractors	Contractor
3	Occupational Health and Safety (OHS)	Engineer-In-Charge
4	Training of Workers	Engineer-In-Charge
5	Addressing worker grievances	Contractor (with oversight by IA)

2.2.4 **POLICIES AND PROCEDURES**

These are listed below under the following sub-headings: i) Incidents and Accident Notification; ii) GBV/SEAH related iii)Occupational Health and Safety; and iv) COVID considerations.

- i) **Incidents and Accident Notifications:** The contractor will promptly notify to the IA/SPMU within 24 hours any major incident or accident having significant impact on the environment, tangible cultural heritage, communities, the public or workers. They will provide sufficient detail regarding the incident or accident, indicating immediate measures taken to address it, and including information provided by any contractor and supervising entity. Further the IA will apprise this to CPMU and WB.
- ii) **GBV/SEAH related:** More than 95% of the contract labour is expected to be men, and women's participation as contract labour or community labour is going to be very low. Contractors will need to maintain harmonious relations with local communities by ensuring labourers/workers adhere to Code of conduct (CoC). The CoC commits all persons engaged by the contractor, including sub-contractors and suppliers, to acceptable standards of behaviour. The CoC will include sanctions for non-compliance, including non-compliance with specific policies related to gender-based violence, sexual

exploitation and sexual harassment (e.g., termination). The CoC will be written in plain language and signed by each worker to indicate that they have:

- received a copy of the CoC as part of their contract;
- been explained the CoC to them as part of induction process;
- acknowledged that adherence to this CoC is a mandatory condition of employment;
- understood that violations of the CoC can result in serious consequences, up to and including dismissal, or referral to legal authorities.

To mitigate potential risks related to on-site safety and GBV, the Contractor/ will undertake actions as given in Table below:

S.No.	Action	Timelines
1 iii) O c u p a t i	Separate, safe and easily accessible facilities for women and men in the place of work and the labour camps. (e.g. toilets should be located in separate areas, well-lit)	Throughout construction period
2	Display signs that the project site is an area where SEA/SH is prohibited.	Throughout construction period
3	Ensure Codes of Conduct are clearly understood and signed by those with a physical presence at the project site;	Upon joining
4	Train project staff on the behavior obligations under the CoCs and Disseminate CoCs (including visual illustrations) and discuss with employees and local communities.	Periodic; every six months

Occupational Health and Safety:

IA is committed to:

- Complying with legislation and other applicable requirements which relate to the occupational health and safety hazards.
- Enabling active participation in OH&S risks elimination through promotion of appropriate skills, knowledge and attitudes towards hazards.
- Continually improving the OH&S management system and performance.
- Communicating this policy statement to all persons working under the control. of IA with emphasis on individual OH&S responsibilities.
- Availing this policy statement to all interested parties.

To avoid work related accidents and injuries, the contractor shall ensure following Do's and Don'ts at site will:

- **Pre employment Health Check up:** Ensure that health of each worker is checked and health record is maintained before deputing them to work.
- **Deployment of EHS officer :** Designate a person responsible for OHS who is fully acquainted with handling of OHS issues
- **Induction training:** Ensure that every workers is given OHS orientation training which will include use of PPE, first aid, use of fire extinguishers, action to be taken in case of accidents, caution to be exercised during working at height or confined areas, respecting system and procedures evolved at site for safe working. Training shall create enough awareness amongst workers so that they take reasonable care

to avoid acts or omissions that are likely to result in injury to self, or the other workers/and other people.

- **First Aid:** Ensure that first aid box is provided at each workplace with easily identifiable location. Few workers shall be trained as first aider including in CPR techniques.
- **PPE:** Ensure availability of PPE. helmet, boot, earplug (for noisy areas) , mask for dusty areas, gloves, safety belt and safety jacket.
- **SOPs:** Define SOPs (standard operating procedures) for Working at height or confined areas which will include minimum two persons working, one at work and another standby as rescuer.
- **Ventilation:** Maintain adequate ventilation at confined areas and at workplace.
- **Illumination:** Maintain adequate illumination at all workplaces.
- **Electric Hazards:** Prevent exposure to electrical hazards.
- **Fire Protection:** Ensure adequate fire extinguisher (as per type of fire hazard viz A, B,C) are placed at workplace.
- **Dust Control:** Ensure that workers are not exposed to high dust and noise level which can affect their health. Use dust suppressing system like water sprinkling and muffler or acoustic enclosures for noise generating system.
- **Gas Cylinder handling:** Acetylene and oxygen/gas cylinders shall be handled using trolley where these cylinder are securely separated with each other for its safe use.
- **Drinking Water and Sanitation:** Ensure that safe drinking water is available at each work site. Also mobile toilets fitted with anaerobic sewage treatment system are provided at each work site.
- **Barricading and securing the work areas:** Each hazardous work area, if any, have safety barricading depending on nature of hazard viz trip, fall danger, restricted entry area, electrical hazard.
- **Safety Signage and Mock Drill:** Place adequate safety caution and signage in local languages for awareness to workers. Also conduct periodic mock drill.
- **Back-up Medical facility:** identify and tie up with equipped hospital capable of providing ambulance and medical facilities or handling major injuries.
- **Accident Reporting Analysis and Prevention:** Identify the reportable accidents², analyse the cause of each reportable accident, maintain the record with analysis and take corrective action based on cause analysis for prevention of such accidents in future.
- **Caution from Covid-19 scenario:** Provide multiple entries for workers to avoid crowding depending upon site condition. Ensure that physical distancing is maintained as far as possible at workplace. Each workers shall be provided with face mask.
- **Compliance to law:** Ensure those legal requirements are followed like restriction on use of Child labour etc.

²An accident which causes death or which causes any bodily injury by reason of which the person injured is prevented from working for a period of forty-eight hours or more immediately following the accident (as per Building and Other Construction Workers Act, 1996)

DON'T

- Do anything which may lead to risk to established health, safety and well being rules or relevant health, safety and well being regulatory requirements.
- Jeopardise mental and physical well being or that of people you work with by, for example, imposing unreasonable deadlines or regularly demanding longer working hours.

Further to enforce the compliance of environmental management, contractors will be responsible and liable for safety of site equipment, labours and daily workers attending to the construction site and safety of citizens for each work site, as mandatory measures.

Occupational Health and Safety Monitoring

OHS compliance monitoring will be carried out by designated E&S Expert every month. Contractor will provide compliance in initial report to Engineer in charge and thereafter submit a compliance report every 3 months. Following shall be covered as part of OHS monitoring:

- Health check-up records of workers, as applicable.
- Accident hot spots on transport route, if any
- Training and awareness of labour – OHS, Emergency Management, Use of PPEs
- Identification of hazardous working locations and marking
- Emergency response procedure
- Availability of PPEs – types, numbers
- Accident reporting

Communication and Consultation (Workers)

Workers consultation will be regular features. However, this aspect shall be as per consultation process defined under other plans and ESS4.

Training and Records

Contractor will provide training to all workers before start of work and thereafter every three months. He will maintain training records and share the details with E&S experts as part of his quarterly progress report. The training should cover the following:

- General awareness about the site, type of works to be carried out and risks involved
- Use of appropriate PPEs for different types of works including dust masks and ear muffs
- Following work instructions for hazardous/risky operations as marked on site
- How to act during emergency including basic rescue operations and accident reporting
- Location of first aid boxes and fire extinguishers and how to use them
- Handling of gas cylinders

Emergency Preparedness and Management

Emergency Preparedness and Management Plan shall be followed as given under ESS 4

Reference to World Bank Group –(WBG) Environmental Health and Safety (EHS) and Other Guidelines

The WBG Guidelines of Environmental Health and Safety (WBGEHS) provide detailed guidance note on health and safety requirement and good practices. The WBGEHSGuidelines are intended to be used in conjunction with Indian legislation on OHS at construction sites and shall be referred by contractor and IAs while finalizing site specific contractor's EHS management plan.

iv) COVID Considerations:

COVID considerations: **Influx of Migrant Labour** is likely as there will be a need to perform high skilled jobs which may not be available locally or even within the state. These are likely to come from other states or adjoining states or districts. Possibly 10-15 persons are required for highly skilled jobs. The remaining – semi-skilled and unskilled labour will be sourced from within the district. Hence as per WB's guidance note³, for such workers, Contractor needs to:

Prepare detailed profile of Workforce as per table below:

Key work activities	Schedule for such activities	Duration of contract	Rotation	Place of residence		
				workers from community	Within local community	On site

At the time of labour engagement and start of work or anytime during the execution of work, any directives issued by government with respect to labour movement, labour stay at site, social distancing or any other restriction put in place to contain the spread of infectious disease such as COVID-19.

Actions by IA

- i. **IA will monitor and ensure that contractor** will follow any restriction on movement or advise on distancing as issued by government due to COVID-19 or any other infectious disease during the period of construction. IA will request the details from the Contractor about the measures being taken to address the risks. This may include the following aspects as relevant
 - a. Conducting pre-employment health checks
 - b. controlling entry and exit from site/workplace
 - c. General hygiene
 - d. Cleaning and waste disposal

³ ESF/SAFEGUARDS Interim Note: COVID-19 consideration in constructions/civil works projects

- e. Adjusting work practices
 - f. reviewing accommodation arrangements, to see if they are adequate and designed to reduce contact with the community
 - g. reviewing contract durations, to reduce the frequency of workers entering/exiting the site
 - h. rearranging work tasks or reducing numbers on the worksite to allow social/physical distancing, or rotating workers through a 24-hour schedule
 - i. providing appropriate forms of personal protective equipment (PPE)
 - j. putting in place alternatives to direct contact, like tele-medicine appointments and live stream of instructions.
 - k. Instances of spread of virus
 - l. Training and communication with workers
 - m. Communication and contact with community
- ii. **Request the Contractor to convene regular meetings** with the project health and safety specialists and medical staff (and where appropriate the local health authorities), and to take their advice in designing and implementing the agreed measures.
 - iii. **A senior person** should be identified as a focal point to deal with COVID-19 issues e.g. work supervisor or a health and safety specialist
 - iv. **Request for coordination arrangements**, particularly at site where there are a number of contractors and therefore (in effect) different work forces (*PIU could request the main contractor to put in place a protocol for regular meetings of the different contractors*)
 - v. **Check with Contractors** on whether the workers are informed/encouraged to use the existing project grievance mechanism to report concerns relating to COVID-19

2.2.5 AGE OF EMPLOYMENT

The minimum age of employment for this project shall be 18 years and to ensure compliance, all employees will be required to produce aadhar card or any other valid proof of age. If any contractor employs a person under the age of 18 years, that contractor will not only be terminated by IA but also be reported to the authorities.

2.2.6 TERMS AND CONDITIONS

Terms and conditions for three types of workers are presented below:

- i. The Direct Workers (Dam officials, government officials) are governed by their employment agreements with the Water Resources Department
- ii. Contractors will also be required to comply with the most current Regulation of Wages for the Building and Construction Industry which is issued by the Government and reviewed on a regular basis. The Minimum Wage Act specifies the minimum wages, hours of work, overtime pay, leave entitlements, travelling and Subsistence Allowances and the issue of protective clothing. Before a contract is awarded, contractor is required to certify in writing that the wages, hour and conditions of work or persons to be employed by him on the contract are not less favourable than those

contained in the most current wages regulation issued by the Labour Commissioner. Where a contractor fails to comply with this requirement, the contract with the contractor may be withdrawn as an approved contractor upon recommendations of the Labour Commissioner.

In ensuring full compliance with the law in this regard, contractors will be required to furnish with copies of the labour license and/ or copies of contract of all its workforce. As a monitoring mechanism, a contractor shall not be entitled to any payment unless he has confirmed that all employment conditions of the contract are being complied with. The IA would intervene if the contractor defaults in the payment of wages due to any of its employees.

‘Community Workers’ is further detailed in following sections.

2.2.7 **GRIEVANCE MECHANISM**

The Grievance Mechanism for Workers will be organised as follows.

- i. **Direct Workers (Project Officials):** The Executive Engineer, Dam Authority, will be responsible for providing guidance and advice on all worker related grievances and their redressal, in line with the state and national legislation and the LMP.
- ii. **Contract Workers:** While the Contractor will have his own GRM, the IA (Water Resources Department will have oversight) and the overall responsibility for ensuring the establishment and implementing the GRM for project workers. In this regard, the Executive Engineer will be responsible to ensure that the Contractor has established and operationalised the contract workers grievance redress mechanism. In this, Contractor will be supported by Environment and Social nodal officers by IA designated for the purpose. S/he will also be responsible for tracking and resolving workers grievances. S/he shall maintain records where grievances and complaints, including minutes of discussions, recommendations and resolutions made, will be recorded.

COVID considerations: In COVID context, the nature of complaints may be particularly time-sensitive and sensitive in terms of confidentiality. Hence, Contractor should consider streamlined procedures to address specific worker grievances, which would allow workers to quickly report labour issues, such as a lack of PPE, lack of proper procedures or unreasonable overtime, and allow the project to respond and take necessary action.

- iii. **Community Workers:** The Executive Engineer, Dam Authority, will be responsible for providing guidance and advice on all community worker related grievances with this LMP.

The designated Social Expert will provide overall implementation and capacity building support on resolving all workers grievances and will support the Executive Engineer in this regard. S/HE will also include workers grievance status in the progress report. Grievances will continue to be received through established communication channels. Workers will also be able to submit their grievances through the district Labour Department, whose contacts will be shared with all the contractors and worksites.

2.2.8 CONTRACTOR MANAGEMENT

IA will ensure that contractor monitor, keep records and report on terms and conditions related to labour management. The contractor must maintain records with evidence of all payments made, including social security benefits, pension contributions or other entitlements, as applicable based on workers engagement i.e.-fixed term contract, full-time, part-time or temporary. .The application of this requirement will be proportionate to the activities and to the size of the contract, in a manner acceptable to CPMU and the World Bank:

Labour conditions: records of workers engaged under the Project, including contracts, registry of induction of workers including CoC, hours worked, remuneration and deductions (including overtime), collective bargaining agreements;

Safety: Reportable incidents and corresponding Root Cause Analysis (lost time incidents, medical treatment cases), first aid cases, high potential near misses, and remedial and preventive activities required (for example, revised job safety analysis, new or different equipment, skills training, and so forth).

Workers: number of workers, indication of origin (local and migrant), gender, age with evidence that no child labour is involved, and skill level (unskilled, skilled, supervisory, professional, management).

Training/induction: dates, number of trainees, and topics.

Details of any security risks: details of risks the contractor may be exposed to while performing its work; the threats may come from third parties external to the project. Worker grievances: details including occurrence date, grievance, and date submitted; actions taken and dates; resolution (if any) and date; and follow-up yet to be taken; grievances listed should include those received since the preceding report and those that were unresolved at the time of that report.

2.2.9 COMMUNITY WORKERS

All OHS related aspects shall be applicable to this category of workers also, if they are engaged.

2.3 RESOURCE EFFICIENCY AND POLLUTION PREVENTION (ESS3)

2.3.1 POLLUTION PREVENTION AND ENVIRONMENT QUALITY MANAGEMENT PLAN (PPEQMP)

Dam rehabilitation work in general can be categorised as civil work including paint work and hydro-mechanical work. requiring labour involvement for works, use of resources such as raw material, water and power during construction, pollution generation from storage and handling of material, generation of waste, use of paints and other chemicals for construction activities and generation of hazardous waste, transportation of raw material, etc. As all the proposed structural interventions are within the dams' premises, no adverse impacts are envisaged on communities including on the disadvantaged or vulnerable people.

Resource Efficiency, Pollution Prevention and Management plan is prepared to address potential risks identified with respect to resource use and pollution generation from civil, hydro-mechanical and painting work and also from labour camps and colonies.

2.3.2 OVERVIEW OF PPEQMP

a) Water Management

The proposed intervention activities are not expected to impact water resources as the proposed interventions are neither crossing, altering or disturbing drainages nor impacting ground water resource in any form. Use of resources such as water and power will be optimized before start of work.

Construction related impacts and risks for water quality include:

- Accidental release of fuel or chemicals and contamination from poor waste management practices can affect surface and groundwater; although quantum of waste is expected to be small.
- Fuel/oil leakage from construction machinery working near water bodies
- Construction work along river bank
- Generation of sanitary wastes from labour colony and construction sites finding way to water bodies

Pollution prevention and control measures to avoid surface water pollution shall include:

- Labour camp will have adequate sanitation arrangement in terms of mobile/fixed toilet with arrangement of sewage collection and disposal. No wastewater from the camp/work force site shall be discharged directly without any treatment in to any surface water channels or drain, which eventually joins surface water bodies.
- The oil/lube storage shall be under roofed areas with impermeable cement concrete surfaces and provided with separate drainage system with oil separators. No discharge from oil/lube storage areas shall be directly discharged in to any open surface water channel/ streams.
- No construction debris and/or spills of construction materials are dumped on to stream waterway.
- Construction work along river bank shall be done in lean season when surface water level has receded and clear construction area is available.
- Activities like work on upstream side of barrage (reservoir side) will be taken up only when the water level is low and clear work area is available. Adequate protection needs to be provided to avoid spillage of chemicals/construction material in reservoir.

b) Air Quality Management

Construction activities can give rise to dust emissions if not effectively managed and have the potential to affect receptors near to the main construction sites due to dust generated from demolition, excavation, operation of construction equipment and machinery, increased movement of vehicles, on to the local road network. Earth works will result in exposed areas of soil which will potentially generate dust when the weather is windy. The level and

distribution of dust emissions varies according to the duration and location of activity, weather conditions, and the effectiveness of suppression measures.

Gaseous emission during construction will be from machinery, equipment and vehicles used for material transportation. The operation of vehicles and equipment will result in emissions of carbon monoxide, sulphur dioxide, and oxides of nitrogen. In particular, all commercial vehicle driven with diesel fuel is often used in India. Impact is expected to be localised. Keeping in view the quantum of work and requirement of raw material, only marginal increases in number of vehicles is expected and therefore emission on village road due to vehicular movement will not be significant, however, OHS norms and do's and don'ts will be adhered to for vehicular movement.

As the project is presently operational and the interventions are not going to alter the project operation in any manner, no operational phase impacts are envisaged on ambient air quality.

Pollution prevention and control measures to avoid air pollution shall include:

Among the air pollutants, dust levels in term of $PM_{2.5}$ and PM_{10} , is the most significant. In order to prevent and control the dust levels, the following measures are to be strictly adhered to:

- The contractor/transporter shall carry valid PUC (Pollution Under Control) certificate and only compliant vehicles shall be deployed during construction.
- The vehicles and equipment used during construction should be well maintained, to ensure minimum emissions. Engineer in Charge will carry out physical inspection to ensure compliance.
- The contractor shall provide wind barrier, if required, depending on most prevailing wind direction and presence of sensitive receptors at downwind side, at perimeter of construction site to arrest or blowing of suspended particle.
- Regular sprinkling of the water will be done on construction sites for dust suppression if there is potential of dust emission from storage of handling of loose material
- If power connection is not available, Mobile DG sets may be used for lighting only during construction phase and they should meet emission and noise standards as per guidelines/standards issued by CPCB.
- All the construction workers and other staff, who get directly exposed to dust, should necessarily be provided with dust masks.

c) Noise and Vibration Control

Sources of noise will be the vehicles and equipment for construction at the project sites. Due to construction activity in the area, noise levels will increase during the period of construction, however, they will remain limited to the work area mainly where construction activity will progress.

Impact of noise generation due to operation of construction machines and equipment is the exposure of workers operating these machines and other who are working in the

surrounding. Such impacts can become significant if they are exposed to high noise for long hours continuously.

Pollution prevention and control measures to avoid Noise pollution shall include:

- DG sets, if required, will have a valid Type Approval Certificate and Conformity of Production certificate as per CPCB guidelines.
- All the construction equipment will be required to use available noise suppression devices and properly maintained mufflers.
- Workers in high noise area, will be provided with ear muffs.. Workers exposure (time duration) to high noise will also be controlled.
- Minimize the use of noise producing equipment during night hours to avoid the disturbance to locals and wild animals of surrounding area.
- Vehicles to be equipped with mufflers recommended by the vehicle manufacturer.
- Movement of vehicles on village roads especially heavy vehicles for transportation of construction material, equipment, etc. shall be done during day time only.

d) Waste Management from Hydro-mechanical works

Project interventions such as hydro-mechanical work will generate waste in terms of replaced parts, packaging material, empty containers, use and disposal of oil & grease, iron scrap, etc. There will be a mix of hazardous and non-hazardous wastes. It is important to have a plan ready for disposal of such wastes before start of the activity.

Pollution prevention and control measures with respect to waste management: Project engineer needs to identify all the waste generated from hydro-mechanical work including replaced parts with estimated quantities and categorisation as hazardous and non-hazardous waste. Storage and disposal of removed parts need to be planned by Executive Engineer; separately for hazardous waste which will be given to authorised vendors only.

e) Debris Management

Rehabilitation work will generate construction debris due to repair and demolition works such as removal and fresh laying of rip-raps, removal of top layer during road repairs, operation of construction equipment and machinery and waste generation thereof, etc.

Pollution prevention and control measures in respect of Debris management shall include:

- debris disposal site shall be identified by contractor and concerned Executive Engineer together and necessarily avoid natural water courses.
- While identifying such locations, endeavour would be to find low lying areas nearby so as to avoid effort of transporting debris.
- Area on the course of natural drainage should be avoided.
- The construction debris from all operational areas shall be regularly scavenged and disposed off at identified disposal sites only.
 - No dump site shall be located in forest area.
 - No dump site shall be located on agricultural area.
 - The Contractor shall educate his workforce on issues related to disposal of waste.

- The debris disposal sites have to be suitably rehabilitated by leveling and restoring to original conditions and slopes stabilized.
- If required, grass and local shrubs should be planted to rehabilitate the site.

2.3.3 **HOW WATER AND OTHER RESOURCE USE WILL BE PLANNED**

Resource planning will be done by contractor in consultation with engineer in charge. After award, the contractor will make an estimate of the raw material requirement, sources for procurement and transportation route. Contractor will discuss the plan with Engineer in Charge at site and get approval.

Material to be procured from quarry/borrow area, shall be identified by contractor along with source. Approval status will be submitted to engineer in charge for consent.

Requirement of water and power at various locations for construction work and labour camp shall be established by contractor and discussed with Engineer in charge. Locations, where DG power is to be used, shall be identified along with location of DG set and its noise and emission impacts on labour and community. Mitigation measures such as ear muffs for labour and sound barrier for community, if required shall be established.

2.3.4 **ENVIRONMENTAL QUALITY MONITORING PLAN AND PROTOCOLS**

This being rehabilitation work limited to barrage area only with localised impacts which can be managed by implementing standard ESMP, environment quality monitoring is not required. However, keeping in view that barrage is located within Asan Conservation Reserve, which has also been declared a Ramsar Site lately, environmental quality monitoring will be carried out.

Environment Quality monitoring requirements for Asan Barrage as it is located within Asan Conservation Reserve (where applicability of ESS6 is identified during ESDD) are tabulated below:

Activity	Parameters	Locations	Frequency	Responsibility
Ambient Air Quality	PM _{2.5} , PM ₁₀ and SO ₂ for 24 hours	At two major location of rehabilitation works to be identified by E&S Expert	Once before start of construction, once during the construction period and one at end of rehabilitation work	Contractor through NABL accredited Lab
Sound Levels	dB(A) levels – day and night equivalents – hourly reading during day and night time for 24 hrs	At two major location of rehabilitation works to be identified by E&S Expert	Once before start of construction, once during the construction period and one at end of rehabilitation	Contractor through NABL accredited Lab
Wastewater discharge	Physical inspection to ensure wastewater from rehabilitation work is not being	All rehabilitation worksites using water	Once every month	Engineer in charge

Activity	Parameters	Locations	Frequency	Responsibility
	disposed off in river			
Debris handling and disposal	Physical inspection to ensure debris from rehabilitation work is being securely disposed off at identified and approved location	All rehabilitation worksites generating debris	Once every month	Engineer in charge
Storage and disposal of hazardous waste	Physical inspection to ensure hazardous waste is being segregated and securely disposed off to authorised vendors	All rehabilitation worksites generating hazardous wastes	Once every month	Engineer in charge through E&S Expert

2.3.5 **REPORTING**

Contractor will prepare a Quarterly Progress report (QPR) and submit to Engineer in Charge. The report will cover the compliance status of the Project with the ESMP in their scope and shall include Debris Management, Resource Conservation and Pollution Prevention Plan implementation. The Engineer in Charge through E&S expert at SPMU/IA will include its own monthly inspection report and submit the report to SPMU/IA every quarter.

2.4 COMMUNITY HEALTH AND SAFETY (ESS4)

2.4.1 **OVERVIEW**

Dam rehabilitation work, although limited to barrage area, can increase community exposure to risk and impacts. ESS4 addresses the health, safety, and security risks and impacts on project-affected communities and the corresponding responsibility of SPMU/IA to avoid or minimize such risks and impacts, with particular attention to people who, because of their particular circumstances, may be vulnerable. Occupational health and safety (OHS) requirements for project workers are set out in ESS2, and measures to avoid or minimize impacts on human health and the environment due to existing or potential pollution are set out in ESS3. ESDD has identified that there will not be any direct risks and impacts on communities due to proposed rehabilitation work including those who are vulnerable. Following sections propose mitigation measures in accordance with mitigation hierarchy to mitigate any indirect impact on communities.

2.4.2 **HAZARD IDENTIFICATION**

Implementations of sub-project activities pose minimum risk to community health and safety risks as the proposed rehabilitation work will be limited to barrage area only. However, transportation of material; setting up of labour camp; influx of workers, though small in number and generally skilled workers only; pollution generation from rehabilitation

work; may have indirect impact on community as identified in the ESDD report. The risks are summarized below:

Traffic and Road Safety – Sub-project activities are largely structural interventions categorised as civil works and hydro-mechanical works. This would require transportation of construction material, equipment and machinery, instrumentation, parts and accessories to the barrage. In addition, there will be movement of workers (direct and contract workers) to and from site. Transportation of man and material will increase traffic on the village roads during the period of construction leading to increased risk of accidents, spillages, noise and air emissions on generally deserted village roads. Keeping in view the nature of proposed rehabilitation work, only few vehicles will be added per day, therefore this activity do not pose any risk to community.

Community Exposure to Health Issues – The sub-project activities will require contract workers – skilled and unskilled. It is expected that unskilled workers will be available locally; however, a small number of skilled workforce will come from outside the area and expected to stay at site. Influx of workers and setting up of temporary labour camp interfacing with community may increase the health risk of community. Migrant workers can be potential carriers of new infectious diseases not known in the area and impact the community health. Labour camp in vicinity of community may pose risk of unplanned waste and waste water discharge.

Management and Safety of Hazardous Material – Sub-project civil and hydro-mechanical interventions may require use of hazardous material in limited quantities such as fuels, flammable gases e.g. as acetylene and LPG, etc. Transportation, storage and handling of these hazardous materials requiring careful handling and disposal to minimise risk of public exposure.

2.4.3 HAZARD RISK MANAGEMENT

Following measures are proposed to minimise the community health and safety risks due to sub-project activities:

Traffic and Road Safety

- Transportation of loose construction material will be through covered vehicles only
- PUC for all transport vehicles will be made compulsory
- No large scale movement of vehicles at night time
- Drivers will be issued instructions to follow signage and safety norms

Community Exposure to Health Issues

- Health and hygiene requirement of the labour camp will be maintained through out the project cycle – potable water, power, community/individual kitchen, waste management
- Separate toilets for male and female workers staying in labour camp connected to septic tanks/adequate waste collection and disposal arrangement

- Waste management system will be implemented in labour camp by providing adequate number of bins and collection system to avoid littering of waste
- Labour will be sensitized to follow good health and hygiene practices for their as well communities health

Incident Management, OHS monitoring, training:

Labour interaction with communities, Incident prevention and management, OHS monitoring, Health and Hygiene, training are discussed as part of labour management Plan ESS2.

2.4.4 COMMUNICATION AND CONSULTATION (WORKERS & COMMUNITY)

In light of the COVID 19 pandemic, that constrained holding of consultation meetings; stakeholder consultations could not be carried out. As soon as the situation becomes conducive, stakeholder consultations will be organized and ESDD/ESMP reports updated.

2.4.5 EMERGENCY MANAGEMENT PLAN

Emergency Management Plan should be displayed prominently at work site in local language for ease of understanding of workers and staff. It should contain following information:

1. Name, Designation & Contact Numbers of the site supervisor and alternate to be informed in case of any emergency;
2. Contact details of nearby hospitals, fire department and police department
3. Location of fire extinguishers, first aid boxes, emergency alarm and assembly points
4. Potential Emergencies Situations such as fire, fall, electric shock, etc. & response measures such as use of fire extinguishers, rescue procedures, switching off main power (can be made pictorially).

Responsibility of site supervisor (or his alternate in case he is not present) will be clearly defined including:

1. Assess the level of emergency
2. Providing first aid/organize rescue, as per the emergency situation
3. Assess the need for hospitalization and call ambulance
4. Evacuate the area/limit entry after assessing type of emergency
5. Assess emergency situation and its potential of expanding and inform IA and first responders, as required (fire, police and medical)
6. Prepare accident report – root cause, corrective action and preventive action

2.4.6 EMERGENCY CONTROL CENTRE

Control room at barrage serves as Emergency Control Centre, which has basic communication facilities. The same will be upgraded to serve as emergency control centre with following facilities:

- Display of the name of site emergency controller and all relevant phone numbers – project personnel, police, fire, medical, district administration
- Phone connection – landline/mobile (2 numbers)
- Site layout diagram with entry and exit routes / Assembly points
- Two numbers of first-aid boxes with prescribed first-aid medicines
- Two numbers of blankets
- Drinking water
- Two numbers of rescue ropes
- Two numbers of high beam torches
- Fire extinguisher of DCP and CO₂ type.

2.4.7 REFERENCE TO IFC ENVIRONMENTAL HEALTH AND SAFETY GUIDELINES

The IFC guidelines of environmental health and safety provide detailed guidance note on health and safety requirement and good practices. This manual shall guide contractor and IAs while finalizing site specific contractor's EHS management plan.

2.5 BIODIVERSITY CONSERVATION MANAGEMENT PLAN (ESS6)

2.5.1 OVERVIEW OF BIODIVERSITY CONSERVATION AND MANAGEMENT PLAN (BCMP)

Asan Barrage was commissioned in 1967; Asan Barrage and upstream area was declared as a Conservation Reserve in 2005 under Section 36A of Wildlife (Protection) Act, 1972. The reserve spread over an area of 444.4 ha. Asan Conservation Reserve is home to many rare and endangered species and a significant wintering ground for migratory birds. Reserve has also been declared as first Ramsar Wetland site in Uttarakhand on 21/07/2020, under the Ramsar Convention, an international treaty for the conservation and sustainable utilization of wetlands, recognizing the fundamental ecological functions of wetlands and their economic, cultural, scientific, and recreational value.

Though, no interventions are planned outside the barrage area and hence no direct impacts have been identified on natural habitat, however, to eliminate risks of indirect impacts due to outside labour and transportation of man and material, Biodiversity Plan has been prepared.

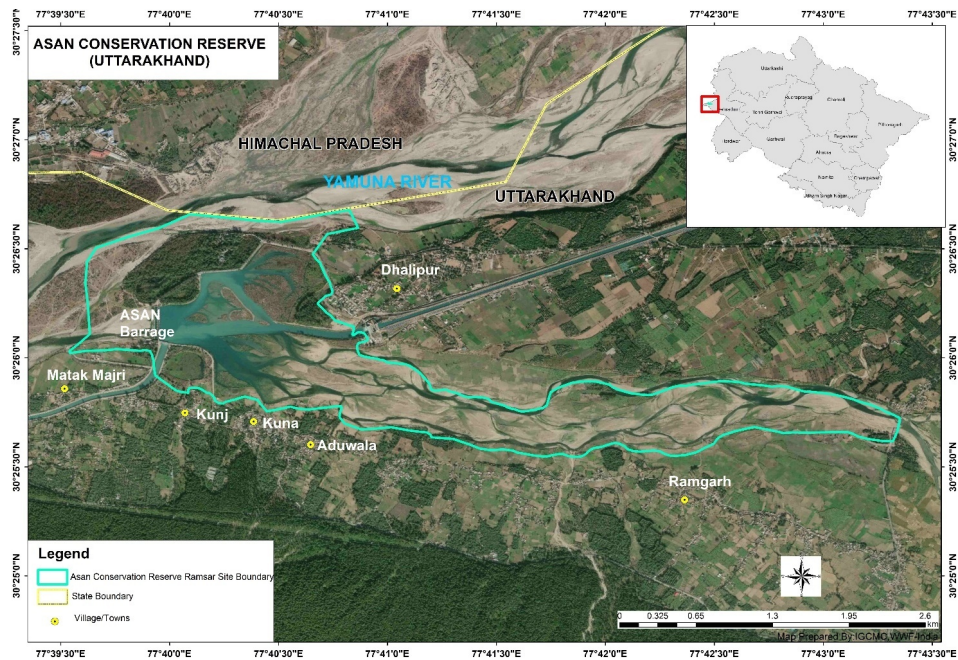
2.5.2 SUB PROJECT DESCRIPTION

Rehabilitation works are proposed for Asan Barrage comprising structural remedial works, basic facilities improvement and instrumentation; which are all within the barrage area. The works proposed are largely civil and hydro-mechanical in nature.

Rehabilitation work will be carried out by contractor(s) as these are labour intensive activities and would be completed over a period of 30 months. Labour requirement will vary during the 36 months construction period; the peak labour is expected to be 25-30 persons. Labour will be housed within the barrage area.

2.5.3 ASAN CONSERVATION RESERVE

The damming of the River by the Asan Barrage in 1967 resulted in siltation above the barrage wall, which helped to create bird-friendly habitats. These habitats support 330 species of birds including the critically endangered red-headed vulture (*Sarcogyps calvus*), white-rumped vulture (*Gyps bengalensis*) and Baer's pochard (*Aythya baeri*). More than 1% of the biogeographical populations of two waterbird species have been recorded, these being red-crested pochard (*Nettarufina*) and ruddy shelduck (*Tadorna ferruginea*). Other non-avian species present include 49 fish species, one of these being the endangered *Tor putitora*. Fish use the site for feeding, migration and spawning.



Location of Asan Barrage within Asan Conservation Reserve

2.5.4 LIKELY IMPACT OF PROJECT ACTIVITIES ON BIODIVERSITY AREAS

As discussed in ESDD report, owing to nature of works to be undertaken, the proposed rehabilitation work will not impact or violate any part of protected area. All rehabilitation works proposed for Asan Barrage are limited to barrage area and none of the activities will be taken outside. Secondly all proposed rehabilitation activities are minor in nature.

There is a risk of indirect impacts such as labour could indulge in cutting of trees for cooking and space heating, hunting of wildlife for food and game, etc. To minimise such risks, Biodiversity Conservation Management Plan is prepared to ensure no net loss to biodiversity. Additionally, transportation of material will be through the routes passing through the protected area. Control of movement of transport vehicles is required to ensure no impact on protected area due to additional traffic.

2.5.5 REGULATORY APPLICABILITY AND REQUIREMENTS

The barrage is located within Asan Conservation Reserve and only rehabilitation work is proposed on the existing structures, therefore wildlife clearance will not be applicable. Project authorities will intimate the wildlife department before start of rehabilitation work.

and follow their guidelines for transportation of man and material on the routes passing through the conservation reserve.

2.5.6 CONSERVATION AND MANAGEMENT PLAN

Following measures are proposed for conservation of biodiversity:

- Labour camp shall be made within the barrage area/close proximity on land owned by UJVN.
- Labour will be sensitized to ensure that they do not indulge in tree cutting or hunting.
- Strict restrictions shall be imposed on the workers at site to ensure that they do not harvest any species/produce from the forests and cause any danger or harm to the animals and birds in the wild.
- Work activities shall be undertaken only during day times.
- The fuelwood to the labours shall be provided from plantations meant for the purpose and/or the provision made for the supply of the free/subsidized kerosene/LPG from the depots to avoid forest degradation and destruction of forest and wildlife habitats.
- Project authorities/contractor will be bound by rules and regulation of Wildlife (Protection) Act, 1972 of India; follow the restrictions posed and any other rule and guidelines, stipulated by the state Government.
- Construction and demolition waste, muck generated from excavation, etc. shall be disposed off outside the protected area and with the prior permission of forest/wildlife department and site restored immediately on completion of disposal.
- The project staff and workforce will be appropriately made aware about the importance of biodiversity and shall be advised not to indulge in any illegal activity.
- In case of any violation, strict action and penalties would be levied in accordance with the law by appropriate authority.
- Wastewater from rehabilitation work will not be discharged outside the barrage area in any natural drainage without treatment.
- Vehicles will move during day light hours only and number of vehicles at any given time on the route will also be controlled to minimise air and noise pollution.
- Speed limit, PUC, No horns will be strictly implemented for all types of transportation.
- Minimum levels of noise during construction activities will be maintained. Vehicles plying for men and material shall not be allowed to use loud horns. In addition, some of the suggested measures for mitigation of noise impact are given below:
 - Maintenance of equipment that are potential source of noise.
 - The equipment that needs to be placed permanently at one place like generators, etc. should be housed in enclosures consisting of noise absorbing structures.
 - The heavy equipment like rotating or impacting machines should be mounted on anti-vibration mountings.
 - Wherever combustion engines are required, they will be fitted with silencers.
 - The traffic generated due to movement of trucks, dumpers, etc. used for the works will be regulated. Necessary orientation will be provided to the traffic operators/

drivers to make them aware of the environmental aspects of the traffic movement in the protected area.

2.5.7 MONITORING, COMPLIANCE REPORTING AND BUDGET

Physical inspection by Engineer in Charge, before start of work and thereafter every month to check:

- Location of labour camp/colony, and security arrangement.
- Route of labour movement from camp/Colony to work site and back and any possible interference
- Review of complaints received, if any, reporting uncontrolled labour movement in the protected area and take corrective action
- Review of labour training content and records to ensure labour is sensitized to the need of biodiversity conservation
- Route of transportation through protected area, control measures adopted and their compliance
- Ensuring contractor is providing kitchen/fuel or making provision of community kitchen for workers
- Location/arrangement of muck and debris/disposal
- Wastewater treatment and discharge in a manner not to impact the protected habitat.
- Preparing quarterly compliance report

Budget for biodiversity conservation, which largely involve inspection and monitoring by Engineer In Charge, will be part of overall ESMP implementation budget.

2.6 STAKEHOLDER ENGAGEMENT PLAN (ESS10)

2.6.1 IDENTIFICATION OF STAKEHOLDERS

Based on the current set of proposed interventions, the following potential stakeholders were identified and categorized as Affected Stakeholders, Other Interested Stakeholders, and Disadvantaged & Vulnerable Stakeholder.

- Affected Persons:** There are no affected persons who shall be directly or indirectly adversely affected by the proposed interventions.
- Other Interested persons:** In relation to structural interventions, these would be contractors, project management consultants, regulatory **bodies/institutional** stakeholders such as Pollution Control Board, Forest and Wildlife department or other environmental authorities, etc. In relation to non-structural interventions, these would be communities living downstream of barragewho would be the key stakeholders during the implementation of EAP.
- Disadvantaged and Vulnerable Stakeholders:** Illiterate persons, physically challenged, women and elderly would be key stakeholders – requiring special focus and outreach to ensure that they are well informed about the provisions of the EAP.

2.6.2 STAKEHOLDER CONSULTATION

In light of the COVID 19 pandemic, that constrained holding of consultation meetings; stakeholder consultations could not be carried out. As soon as the situation becomes conducive, stakeholder consultations will be organized and ESDD/ESMP reports updated.

2.6.3 STAKEHOLDER ENGAGEMENT AND PROJECT CYCLE

Table 1 lists the different types of information, relevant target audience depending on the nature of information, modes and frequency of engagement with these stakeholders.

Environmental and Social Management Plan (ESMP) for Asan Barrage

Table 1 – Stakeholder Engagement by Activities

Information to be disclosed	Target stakeholders	Tools of engagement & mode of disclosure	Frequency	Responsibility
Emergency Action Plans (preparation and implementation)	<ul style="list-style-type: none"> ✓ District Administration, ✓ Revenue department ✓ Police ✓ SDMA, DDMA, NDMA ✓ Print and electronic media ✓ Farmers, Communities (affected/ other interested) in the barrage vicinity 	<ul style="list-style-type: none"> ✓ Consultative meetings and EAP Dissemination workshop ✓ Website notifications ✓ SMS alerts ✓ Meetings to inform Village heads or community representatives 	<ul style="list-style-type: none"> ✓ Multiple 	SPMU/IA
Provisions related to a. Dam Safety b. Biodiversity around the barrage and clearance if any required	<ul style="list-style-type: none"> ✓ Contractor ✓ SPMU staff ✓ Forest Department ✓ Pollution control Board ✓ Farmers, Communities (affected/ other interested) in the barrage vicinity 	<ul style="list-style-type: none"> ✓ Consultation meetings related ESDDs and ESMP ✓ Web disclosure of related ESDDs and ESMP 	<ul style="list-style-type: none"> ✓ Multiple ✓ Must before work starts ✓ During implementation 	SPMU/IA
Work opportunities for Structural works	<ul style="list-style-type: none"> ✓ Contractors ✓ Consultants 	<ul style="list-style-type: none"> ✓ Website notifications ✓ Tender advertisements in newspaper 	<ul style="list-style-type: none"> ✓ Multiple ✓ Continuous 	SPMU/IA
Work opportunities for ✓ Petty contracts ✓ Labour	<ul style="list-style-type: none"> ✓ Communities (including disadvantaged persons) ✓ Petty contractor 	<ul style="list-style-type: none"> ✓ Website notifications ✓ Meetings to inform Village heads or community representatives 	<ul style="list-style-type: none"> ✓ Multiple ✓ Continuous 	SPMU/IA and Contractor
GBV related provisions	<ul style="list-style-type: none"> ✓ IA officials ✓ Contractor personnel ✓ Consultant personnel 	<ul style="list-style-type: none"> ✓ Office circular and training events ✓ Website notifications ✓ Bid documents and Contract provisions 	<ul style="list-style-type: none"> ✓ Multiple ✓ Continuous 	SPMU/IA
Labour management procedure	<ul style="list-style-type: none"> ✓ IA officials ✓ Contractor personnel ✓ Consultant personnel 	<ul style="list-style-type: none"> ✓ Website notifications ✓ Bid documents and Contract provisions 	<ul style="list-style-type: none"> ✓ Multiple ✓ Continuous 	SPMU/IA
Grievance mechanisms	<ul style="list-style-type: none"> ✓ Communities (affected/ other interested) ✓ Contractors (for procurement related) 	<ul style="list-style-type: none"> ✓ Phone number or Toll free Helpline ✓ Display boards at site with GRM information ✓ Consultative meetings ✓ Website notifications ✓ Meetings to inform Village heads or community representatives 	<ul style="list-style-type: none"> ✓ Continuous ✓ Multiple 	SPMU/IA

2.6.4 **TIMELINES FOR INFORMATION DISCLOSURE AND FEEDBACK**

Information to be disclosed with timelines for providing feedback, responding to newspaper advertisements is presented below:

Table 2: Disclosure, feedback and timelines				
Disclosure of information/documents	Mode of providing feedback	Timeline for feedback	Conveying of responses by SPMU/IA	
			No. of days	Mode
ESMF, SEF	Email ID/website	-NA-		
Draft ESDDs/ESIAs; draft ESMPs	Email ID/website	30 days	Within 7 days of end of feedback period	Website notification
Executive Summaries in local languages of ESMP	Email ID/website	30 days	Within 7 days of end of feedback period	Website notification

2.6.5 **MONITORING AND REPORTING**

Quarterly progress reports of IA to include the following parameters

S. No.	Parameters	Status (Nos./description)
1	Number of consultation meetings conducted within a reporting period (e.g. monthly, quarterly, or annually);	
2	Number and types of IEC materials used	
3	Number of project events published/broadcasted in the local, regional media	
4	Type and frequency of public engagement activities;	
5	Number and type of grievances received within a reporting period (e.g. monthly, quarterly, or annually) and number of those resolved within the prescribed timeline	

CHAPTER 3: ENVIRONMENTAL AND SOCIAL MITIGATION AND MONITORING PLAN

3.1 PURPOSE OF ES MITIGATION MANAGEMENT AND MONITORING

For the relevant environmental and social risks identified during the ESDD process of the Project, Management Plans are furnished in Chapter 2. This Chapter provides E&S risk/impacts mitigation and management plan, along with monitoring requirement, responsible entity for implementation of mitigation plan as well as monitoring. The mitigation measures are presented ESS wise at Table 3.1.

Table 3.1 Environment and Social Mitigation and Management Plan

Activity and environmental aspects	Environmental and Social Risks/Impacts	Mitigation Measures	Stage of Action	Monitoring Requirements and Frequency	Responsibility of Implementation of Mitigation Measures	Monitoring Responsibility
Labour Camp (ESS 2)	Labour health, Hygiene, Drinking Water availability and Sanitary waste generation	Provide clean, hygienic and safe camp facilities for workers with provision of safe drinking water, separate canteen facility, first aid, periodic health check-up and waste management. Make Provision for adequate number of toilets separate for male and female, with arrangement of sewage collection and disposal	Before Construction	Physical Inspection by IA before construction and thereafter every 3 months or if any complaint is received whichever is earlier. Review of complaints should be done every month by IA.	Contractor	IA
	Water and Power requirement impacting other competitive users	Source of water and power for labour camp as per advisory from IA	Before Construction			
	Tree cutting by labour for cooking and	Provision of community kitchen/kitchen fuel (LPG) for labour. Restriction of cutting any tree	Before Construction			

Activity and environmental aspects	Environmental and Social Risks/Impacts	Mitigation Measures	Stage of Action	Monitoring Requirements and Frequency	Responsibility of Implementation of Mitigation Measures	Monitoring Responsibility
	space heating					
	Outside labour, may be bringing in new and infectious diseases not known to area	Pre deployment health check -up of labour (if workers are planned to stay at site for more than six months)	Before Construction	Review of records of health check-up before start of construction	Contractor	IA
	SEAH/GBV risk within as well as outside the camp	Training and awareness of workers, identification of GBV hotspots and monitoring, establishing GRM mechanism	Entire duration of project	<ul style="list-style-type: none"> • Review of training records and identified GBV hotspots and monitoring arrangement at start and every 3 months • Monthly Review of complaints received under GRM 	Contractor; IA to establish GRM; GBV support	IA and SPMU for GRM
Labour employment and working conditions (ESS 2)	<ol style="list-style-type: none"> 1. Non-payment of wages and overtime 2. Non-compliance to working hours, number of working days per week, rest day and rest time 3. Inadequate 	Ensure compliance to BOCW and other applicable legal instruments; latest state government notification issued by Labour Department for minimum wages, working hours, child labour age should be complied with.	Before construction - Contractors Labour License, Insurance, ESI and PF registration Regular review during	Document review such as licenses, record register and muster roll; Physical inspection of working condition at site and labour camp; every 3 months or if any complaint is received whichever is earlier; Review of complaints received under GRM	Contractor	IA

Activity and environmental aspects	Environmental and Social Risks/Impacts	Mitigation Measures	Stage of Action	Monitoring Requirements and Frequency	Responsibility of Implementation of Mitigation Measures	Monitoring Responsibility
	<p>facilities at site - drinking water, toilets, food</p> <p>4. Not providing temporary accommodation for labour free of charge with separate toilet, bathing and lavatory facilities</p> <p>5. Not providing kitchen and creche, if applicable</p> <p>6. Employment of child labour</p>		construction	every month		
Occupational Health and Safety during works (ESS 2)	<p>1. Unsafe working conditions – poor marking, instructions,</p> <p>2. Not enough PPEs for all workers; PPEs not</p>	<p>1. Contractor/Supervisor will inspect the work sites and mark them as high, moderate and low risk areas and ensure workers follow instruction to work in these areas</p> <p>2. Adequate number of good quality appropriate PPEs to be provided by contractor – helmets, gum boots, safety belts, safety harness, gloves, overalls, ear plugs, face</p>	<p>Before construction – training and availability of PPEs</p> <p>During construction – marking of</p>	<p>Review of training records, review of availability of PPEs, Review of accident records and corrective preventive action reports – before start of construction thereafter every 3 months</p>	Contractor	IA

Activity and environmental aspects	Environmental and Social Risks/Impacts	Mitigation Measures	Stage of Action	Monitoring Requirements and Frequency	Responsibility of Implementation of Mitigation Measures	Monitoring Responsibility
	<p>appropriate for all types of risks at site or Poor quality PPEs</p> <p>3. Inadequate training and awareness of workers in use of PPEs and/or in emergency response,</p>	<p>masks, etc.</p> <p>3. All workers should be provided with training on use of appropriate PPEs and how to respond during emergency</p> <p>4. Adequate EHS instructions shall be displayed at site</p> <p>5. Provision of First aid with availability of trained first aiders shall be ensured</p> <p>6. SOP shall be developed as per best practices and IFC EHS guidelines for unsafe conditions like working on height, working in confined areas, electrical safety, fall prevention, handling of hazardous material like welding gases</p> <p>7. Adequate provision of life jacket if working on reservoir side</p> <p>8. Procedure of incident prevention, investigation and corrective preventive action</p>	<p>areas as per risks, rehearsing emergency response and identify training needs</p>			
COVID 19 conditions	Global Pandemic seriously affecting the employment of labour and working conditions	<ul style="list-style-type: none"> Appointing a COVID-19 focal point with responsibility for monitoring and reporting on COVID-19 issues, and liaising with other relevant parties 	Before start of mobilization of workers	First hand monitoring and review	Contractor and IA	Contractor and IA

Activity and environmental aspects	Environmental and Social Risks/Impacts	Mitigation Measures	Stage of Action	Monitoring Requirements and Frequency	Responsibility of Implementation of Mitigation Measures	Monitoring Responsibility
Use of resources – water, power and raw material for dam rehabilitation work (ESS 3)	Resource wastage, impact on land environment while procuring material from quarry/borrow areas	Resource planning will be done by contractor in consultation with engineer in charge (Estimate of material requirement from quarry/borrow area, identification of nearest locations with approval status). To ensure that material is sourced from quarries or borrow areas which has valid environmental clearance.	Before start of construction work	Review of resource planning ensuring efficiency Review of quarry and borrow material requirement with approval status, validity and environment clearance – once before start of construction	Contractor with IA	IA and SPMU
Pollution generation from rehabilitation work sites and labour camp (ESS 3)	<ol style="list-style-type: none"> 1. Air and noise emissions from storage and handling of raw material and during execution of civil and hydro-mechanical work 2. Water pollution from construction activities and from labour 	<ol style="list-style-type: none"> 1. Ensuring covered storage of loose material/sprinkling of water to minimise fugitive emissions 2. Maintaining construction equipment and ensuring DG set used for power have valid certificate of Type Approval and also valid certificates of Conformity of Production as per conformance labelling. DG stack height shall be as per the Consent to be obtained from State Pollution Control Board before start of work. 3. Ensuring use of dust masks, if workers are exposed to dust emissions and ear muffs for exposure to high noise for long 	During entire project duration	<p>Ambient Air Quality Monitoring (PM_{2.5}, PM₁₀ and SO₂ for 24 hours) at 2 major construction sites, before start of construction (as identified by Engineer in charge) once during construction and once at the end of rehabilitation work</p> <p>Sound Level monitoring (dB(A) levels) at 2 major construction sites (as identified by engineer in charge), once before</p>	Contractor through NABL accredited Lab; Contractor	IA

Activity and environmental aspects	Environmental and Social Risks/Impacts	Mitigation Measures	Stage of Action	Monitoring Requirements and Frequency	Responsibility of Implementation of Mitigation Measures	Monitoring Responsibility
	<p>camp</p> <p>3. Debris generation from excavation work, if any, and debris generation from repair work</p> <p>4. Hazardous waste generation from civil construction work such as painting and hydro-mechanical work, replacement of parts, etc.</p>	<p>durations</p> <p>4. Provision of mobile toilets at work site</p> <p>5. Wastewater from construction sites not to be discharged untreated (compliance with general discharge standards)</p> <p>6. construction debris to be disposed off at pre-identified and approved site</p> <p>7. Hazardous waste (Empty barrels/containers/liners contaminated with hazardous chemicals /wastes; Contaminated cotton rags or other cleaning materials) to be separately stored and disposed off to authorized vendors only</p>		<p>start of construction once during construction and once at the end of rehabilitation work</p> <p>Monthly physical inspection to ensure wastewater from rehabilitation work is not being disposed off in river; debris is being disposed off at identified locations.</p> <p>soil level : near construction camp site or active work site area where probability of waste discharge exists</p> <p>Physical inspection of use of PPEs, review of DG specification, wastewater discharge, and debris handling and disposal – every month</p> <p>Physical inspection of segregation, storage and disposal of hazardous waste to</p>		

Activity and environmental aspects	Environmental and Social Risks/Impacts	Mitigation Measures	Stage of Action	Monitoring Requirements and Frequency	Responsibility of Implementation of Mitigation Measures	Monitoring Responsibility
				authorised vendor – every month		
Transportation of material to project site through village roads. (ESS 4)	Increase in the traffic on village roads leading to air and noise emissions as well as risk of accidents.	1. All vehicles used by contractors for transportation of persons and material should have valid PUC 2. Loose material should only be transported in covered vehicles	During entire duration of project	Physical inspection and review of documents before construction and thereafter every 3 months or if any complaint is received whichever is earlier	Contractor	IA
Biodiversity Conservation for sub-projects in close proximity to Protected area as per ESMP (ESS 6)	Indirect impacts due to rehabilitation work within Conservation Reserve involving limited outside labour	As per ESMP section 2.5.6	Before start of construction	Physical inspection of location of labour camp, labour movement, transportation routes through protected area, pollution generation – wastewater discharge, muck/debris disposal, noise levels, air emissions; as detailed in Biodiversity Conservation Plan	Contractor	IA
Stakeholder Engagement Plan	stakeholder participation, implementing the grievance	Grievance mechanism	Early in the project Throughout the project		IA	IA

Activity and environmental aspects	Environmental and Social Risks/Impacts	Mitigation Measures	Stage of Action	Monitoring Requirements and Frequency	Responsibility of Implementation of Mitigation Measures	Monitoring Responsibility
(ESS 10)	mechanism, ensuring continuous information transfer through open communication	EAP consultations, dissemination material, awareness sessions, print and electronic media campaigns	across various activities			

3.2 ES MITIGATION AND MONITORING PLAN – ACTION RESPONSIBILITY MATRIX

Various preparatory action and plans are to be prepared before start of construction work by contractor and Implementing Agency (Reference Chapter 2 and section 3.1) Table below lists actions to be taken by contractor and IA.

By Contractor		
Specific Action/ Preparation requirements	Reference Document /format	Stage of Action /Frequency
Preparation of Labour Camp Plan	Number of workers, number of units required, duration of stay; facilities proposed to be provided – toilets, kitchen drinking water, waste management	Once - Before start of work
Health check-up of workers (if workers are planned to stay at site for more than six months)	Health check records	Once - Before start of work
Training and awareness of labour – GBV/ SEA, Code of Conduct, OHS requirements	Topics covered, date of training and attendance	First before start of work, thereafter after every 3 months
Compliance to labour laws	Copy of Labour license, ESI, PF	First before start of work, thereafter as per expiry/renewal
Identification of hazardous working locations and marking and emergency response plan	List of risky activities	Before start of work
Availability of PPEs	List of PPEs – number of each type	Before start of work
Training of workers on use of PPEs and Emergency Response	Training records	First before start of work, thereafter after every 3 months
Ambient air quality and sound level monitoring	As per the report of NABL accredited lab	Before start of work, during construction and at the end of rehabilitation work
Identification of authorised vendor of hazardous waste	Name of the vendor, status of authorisation and copy of authorisation	Before start of work
Identification of approved quarry/borrow	Name of the supplier,	Before start of work

area	copy of approval	
Submission of Quarterly Progress Report		Within 2 weeks of end of every 3 months period from start date

By Implementing Agency supported by EMC	
Specific Action/Preparation requirements	Timeline/Frequency
Identification of suitable location of labour camp, if applicable	Before start of work
Identification of source of water and power for labour camp, if applicable	Before start of work
Identification of GBV hotspots	Before start of work
Approval of quarry/borrow area	Within one week of submission of details by contractor
Identification of ambient air quality and sound level monitoring locations.	Before start of work
Identification of debris disposal location	Before start of work
Establishing GRM and its awareness - poster/signage with contact details	Before start of work
Ensuring effectiveness of GRM and review of complaints received	Every month during the entire duration of project implementation
Inspection of labour camp ensuring adequate facility	First on set up, thereafter every 3 months
Reviewing contractors documents and ensuring compliance to labour laws	First on setup, thereafter every 3 months
Ascertaining adequacy of good quality PPEs	Once before start of work, thereafter every 3 months
Physical inspection at work site - air emissions, noisy operations, use of PPEs	Every month during the entire duration of work
Submission of Quarterly Progress Report	Within one month, from end of every 3 months period from start date

CHAPTER 4: IMPLEMENTATION ARRANGEMENTS AND ESMP BUDGET

The ESMP implementation is mainly the responsibility of Contractor engaged for the Works. Implementing Agency is responsible for Sub Project level activities not directly addressed by Contractor such as GBV referral mechanism, Stakeholder engagement etc. The EMC engaged by Implementing Agency will support the IA in implementation monitoring of ESMP.

In compliance with ESMF, the framework provisions of ESMP, which shall be implemented by Contractor will be included as part of Bids and the Contractor upon onboarding shall submit C-ESMP with updated inputs on management plans. The ESMP will be updated, should additional information/ impacts are determined during the project.

4.1 IMPLEMENTATION AND SUPERVISION ARRANGEMENTS

Table below outlines the management measures and implementation and supervision arrangements for the various activities at different stages of the project.

S. No	Project Stage/Activity	Management Measures	Responsibility	
			Planning and Execution	Supervision/ Monitoring
1	Establishing Labour Camp before start of construction	Provision of separate toilets for male and female, sanitation and waste collection & disposal facilities, provision of kitchen fuel/community kitchen	Contractor	Engineer in Charge
2	Health check of labour before induction(in case outside labour are proposed to employ and stay for more than six months)	Health from an authorised government hospital/dispensary and submission of record	Contractor	Engineer in Charge
3	Compliance to labour laws - before start of construction	Ensure compliance to BOCW and other applicable legal instruments including; latest state government notification issued by Labour Department for minimum wages, working hours, child labour age.	Contractor	Engineer in Charge
4	Identification of GBV hotspots and accident hotspots on transport route	Physical survey and hotspot identification	E&S Expert at Barrage	Engineer in Charge

S. No	Project Stage/Activity	Management Measures	Responsibility	
			Planning and Execution	Supervision/ Monitoring
	before start of construction			
5	Workers training	Workers training covering SEA/SEAH and GBV risks and consequences, OHS training and emergency actions, Code of Conduct – awareness and acceptance; biodiversity conservation	Contractor	Engineer in Charge
6	Occupational Health and Safety of workers during entire duration of project	<ol style="list-style-type: none"> 1. Contractor/Supervisor will inspect the work sites and identify the high risk areas, if any; ensures workers follow instruction to work in these areas 2. Adequate number of good quality appropriate PPEs to be provided by contractor – helmets, gum boots, safety belts, safety harness, gloves, overalls, ear plugs, face masks, etc. 3. All workers should be provided with training on use of appropriate PPEs and how to respond during emergency 	Contractor	Engineer in Charge
7	Resource planning before start of construction	<ol style="list-style-type: none"> 1 Resource planning will be done by contractor in consultation with engineer in charge (requirement of water and power at various location for construction work and labour camp) 2 Estimate of material requirement from quarry/borrow area, identification of nearest locations with approval status 	Contractor	Engineer in Charge
8	Pollution prevention during entire project duration	<ol style="list-style-type: none"> 1. Ensuring covered storage of loose material/sprinkling of water to minimise fugitive emissions. 2. Maintaining construction equipment and ensuring DG set used for power have valid certificate of Type Approval and also valid certificates of Conformity of Production as per conformance labelling 3. Ensuring use of dust masks, if workers are exposed to dust emissions and ear muffs for exposure to high noise for long durations 	Contractor	Engineer in Charge

S. No	Project Stage/Activity	Management Measures	Responsibility	
			Planning and Execution	Supervision/ Monitoring
		4. Provision of mobile toilets at work site 5. Wastewater from construction sites not to be discharged untreated (compliance with general discharge standards) 6. construction debris to be disposed off at pre-identified and approved site 7. Hazardous waste (Empty barrels/containers/liners contaminated with hazardous chemicals /wastes; Contaminated cotton rags or other cleaning materials) to be separately stored and disposed off to authorized vendors only		
9	Safe transportation of man and material during entire duration of project	1. All vehicles used by contractors for transportation of persons and material should have valid PUC 2. Loose material should only be transported in covered vehicles	Contractor	Engineer in Charge
10	Inspection of Labour Camp within PA	1. Physical inspection ensuring adequate waste treatment facilities, availability of kitchen fuel to control tree cutting, labour movement control, etc.	E&S Experts	Engineer in Charge
11	EHS monitoring	To be undertaken throughout the project implementation period with inspection by E& S staff of contractor	E&S experts of contractor	IA

Reporting by contractor and monitoring by SPMU/IA

Contractor will prepare a Quarterly Progress report (QPR) and submit to E&S Experts giving the compliance of ESMP. Details will include status on:

1. Progress on ESMP implementation work plan.
2. Status of Compliance with E&S statutory requirements such as labour licenses, insurance, etc.
3. ESHS incidents & supervision.
4. Usage (no. required, distributed and used) of Personal Protective Equipment (PPE) such as hard hats, safety shoes and safety vests by workers.

5. Safety at work sites like COVID incidents, providing traffic signage, barriers/delineator, management of traffic, drainage and pliable road surface etc.
6. Training conducted, and worker's participation (submit reports with statistics of training and worker's participation).
7. Functioning of GRM relating to labour aspects, including summary details of Workers grievances, if any.
8. Community grievances, if any.
9. Corrective Actions and planned E&S activities for next quarter.

SPMU/IA will prepare its quarterly monitoring report and submit the same along with contractors report to CPMU.

ANNEXURE 1: OUTLINE OF CONTRACTOR'S ESMP

(will cover all on site issues and responsibility with management)

- 1. Sub-project activities description under Contractor's Scope**
- 2. Licensing Requirement**
 - 2.1 Labour License
 - 2.2 Insurance
 - 2.3 Use of approved quarry/borrow areas, if such material is required
 - 2.4 Any other
- 3. Workforce management under COVID 19 considerations, if applicable**
 - 3.1. Profile of work force – work activities, schedule, contract duration, workforce rotation plan, workers place of stay, workers with underlying health issues
 - 3.2. Measures to mitigate risks on account of COVID 19
 - 3.3. Contingency plan covering – pre-health checkup, access restrictions, hygiene, waste management, accommodation arrangements, PPE provision and usage
 - 3.4. Reporting and handling of Instances of COVID 19 cases, training and communication with workers, training and SOPs on communicating and contact with community
- 4. Labour Camp (if outside labour is accommodated in a labour camp)**
 - 4.1. Location of Labour Camp
 - 4.2. Number of labour to be housed and duration
 - 4.3. Break-up of labour workforce – male, female, children
 - 4.4. Number of Units in Labour Camp
 - 4.5. Source and Provision of Water and Power Connection including Drinking Water
 - 4.6. Cooking Arrangement – Individual Kitchen/community Kitchen
 - 4.7. Source, Type and Provision of Kitchen Fuel
 - 4.8. Toilet facilities – individual/community; fixed/mobile and sewage disposal arrangement
 - 4.9. Waste collection and disposal arrangement
 - 4.10. Identify Risk of Community Interface – any fencing/separation requirement
 - 4.11. Security and general lighting arrangement
- 5. Resource Planning**
 - 5.1. Water and power requirement for works and locations
 - 5.2. Need for water line or electrical wiring
 - 5.3. Raw material requirement and source(s)
 - 5.4. Temporary storage(s) at site and location(s) – cover/uncovered
 - 5.5. Transportation route from source to storage

6. Pollution Prevention

- 6.1. Potential of dust emission from openly stored raw material and mitigation arrangement – covering, sprinkling, etc.
- 6.2. Potential of water pollution from spillage and leakage from raw material storage and preventive measures
- 6.3. Potential of air emissions from works including toxic emissions from paints and chemicals, emissions from DG sets and other construction equipment – locations where potential is high, possibility of community impact, impact on workers, preventive measures such as dust masks for workers, etc.
- 6.4. Potential of noise generation from works (use of equipment and machinery, demolition work) including from any activity planned at night – locations where potential is high, possibility of community impact, impact on workers, preventive measures such as ear muffs, etc.
- 6.5. Potential of water pollution from works – possibility of leakage to surface water or accumulation in low lying areas; preventive measures/treatment requirement
- 6.6. Estimate of excavated earth/construction debris requiring disposal – quantum, sources(s) of generation, identified dumping sites, transportation mode and route, period of dumping and restoration plan

7. Occupation Health & Safety and Emergency Management

- 7.1. PPE requirement and numbers
- 7.2. Lists of tasks and work zone critical for hazard prevention, if any
- 7.3. Location of warning signage for hazard prevention
- 7.4. Requirement of first aid boxes and portable fire extinguishers
- 7.5. Key person(s) to be contacted during emergency
- 7.6. Protocol for deciding the level of emergency – need for hospitalization, information to authorities, etc.
- 7.7. Process of accident analysis, corrective and preventive measures and need for reporting

8. Addressing GBV Risks

- 8.1 Preventive measures – provision of lighting, separate toilet areas for men and women, increased vigil and security arrangement for community sensitive GBV hotspots, if identified by dam authorities.
- 8.2 Sensitizing and awareness of labour on GBV issues including penalties and legal action against offenders
- 8.3 Awareness about GRM

9. Code of Conduct

- 9.1 Preparation of Code of conduct
- 9.2 Making labour aware of conduct with all the provisions, do's and don'ts, penalties for non-compliances, etc.

- 9.3 Displaying CoC at prominent locations
- 9.4 Signing of CoC by workers

10. Awareness and Training

- 10.1 Plan for training and awareness covering Pollution Prevention, OHS, Use of PPEs, Accident reporting and emergency management, CoC, GBV, GRM, etc.
- 10.2 Training schedule
- 10.3 Training records